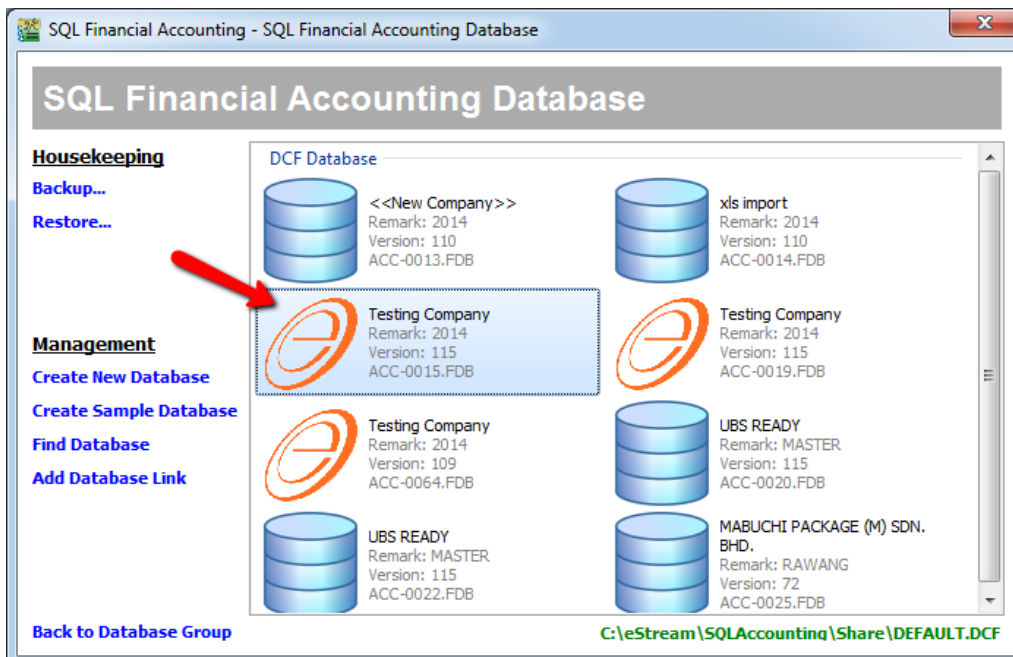


## Step to Clone Master Data

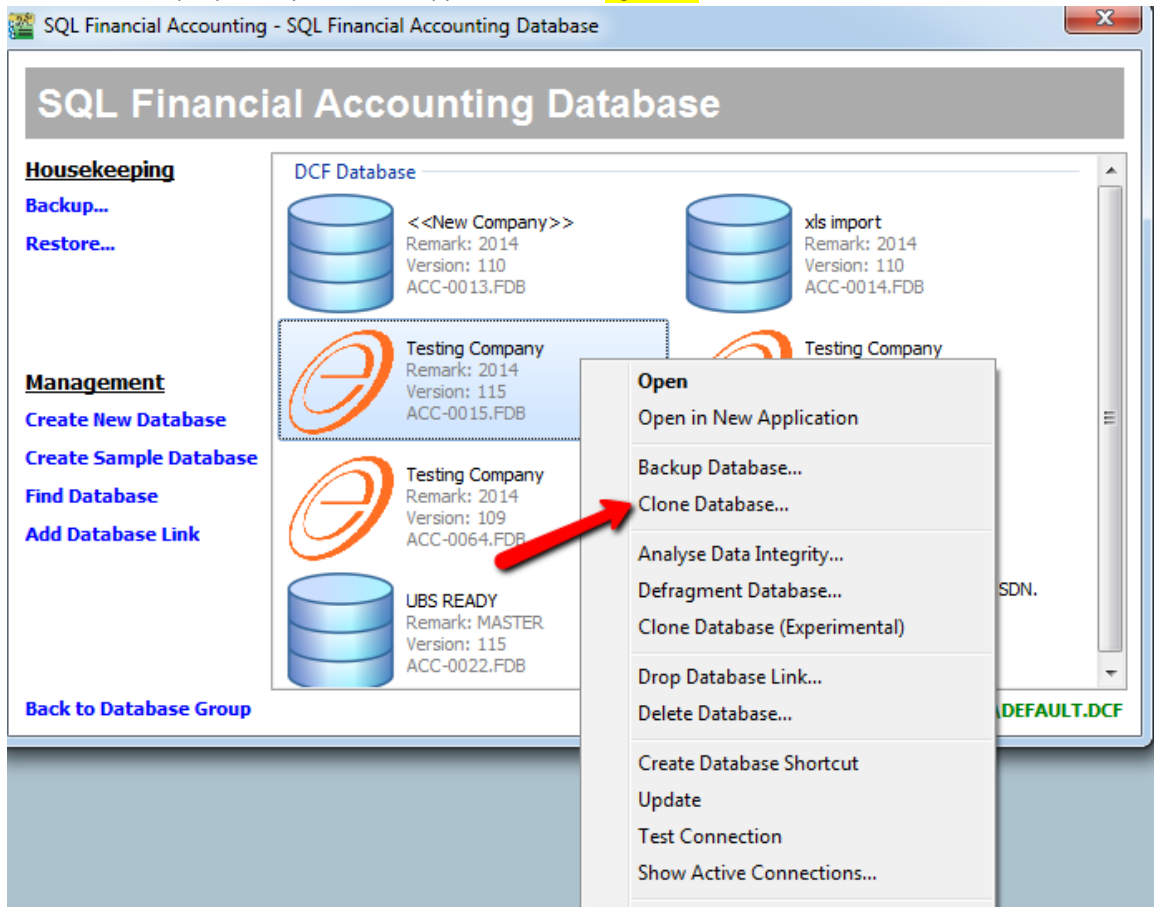
SQL Clone database is to copy all maintenance file eg. chart of account, customer, supplier, stock group, stock item or even report & script from an existing database to a new empty database.



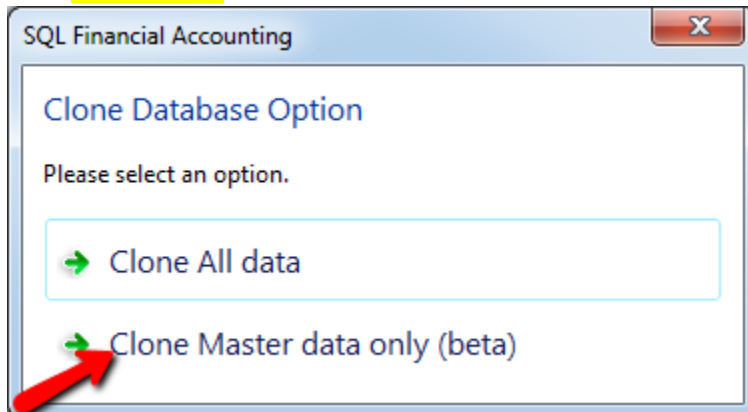
1. Double click SQL Icon > Press  Button



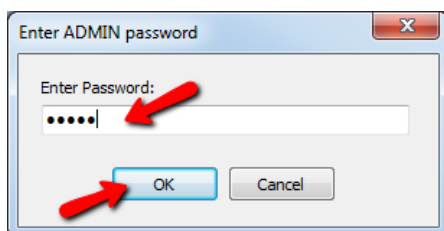
2. Point on the Company name you wish to copy master data & right click on it



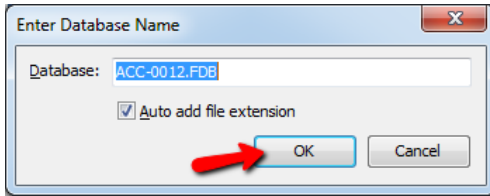
3. Select Clone Database



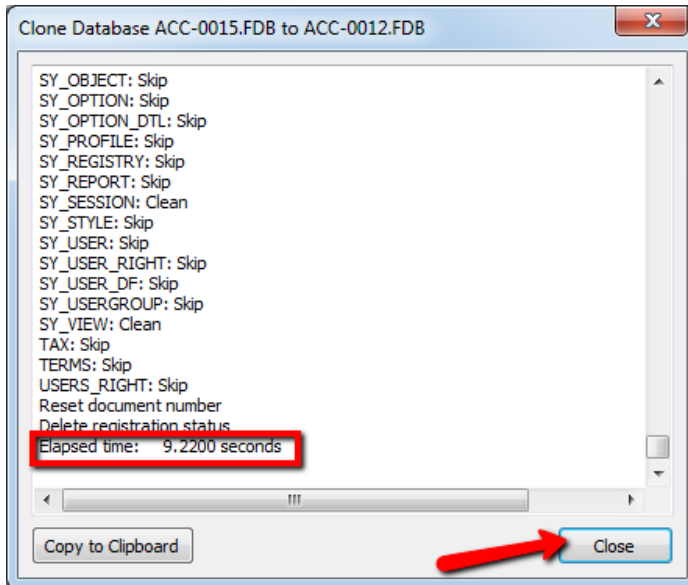
4. Select Clone Master Data only(Beta)



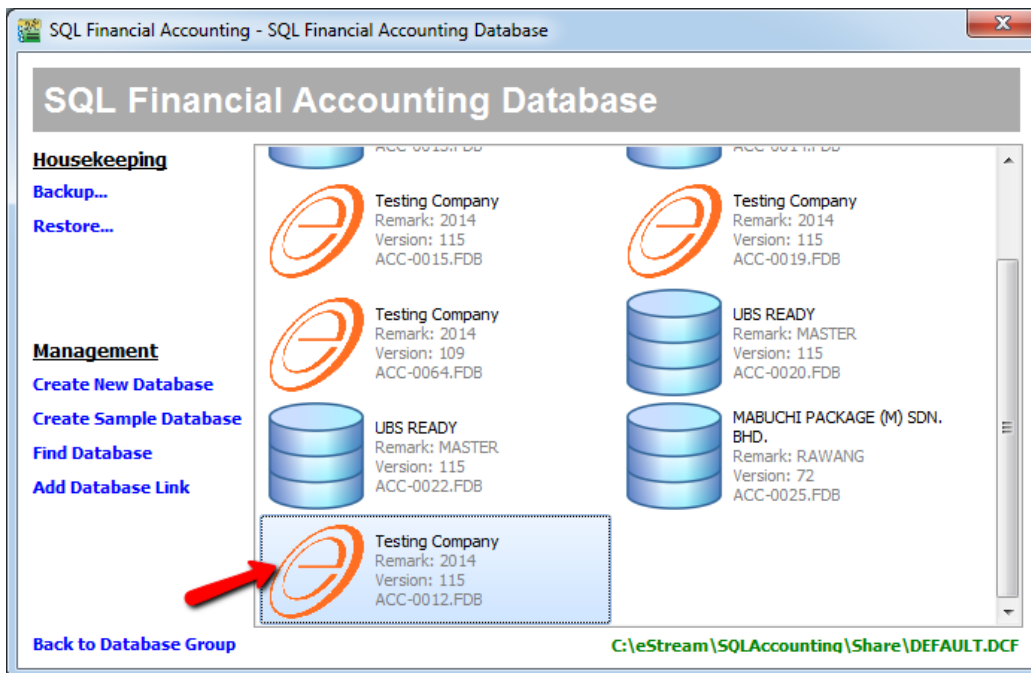
5. Enter ADMIN password > OK



6. Press **OK**



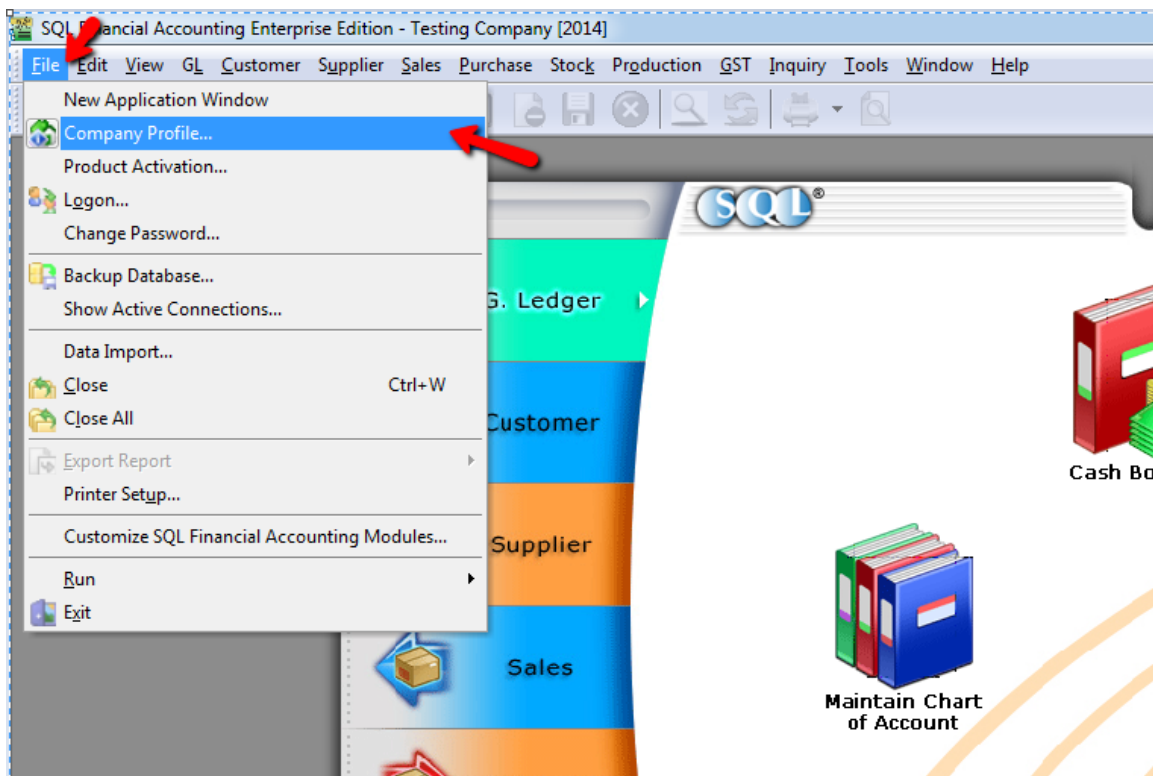
7. After done clone you will found message **Elapsed time : x.xxxx seconds** > **Close**



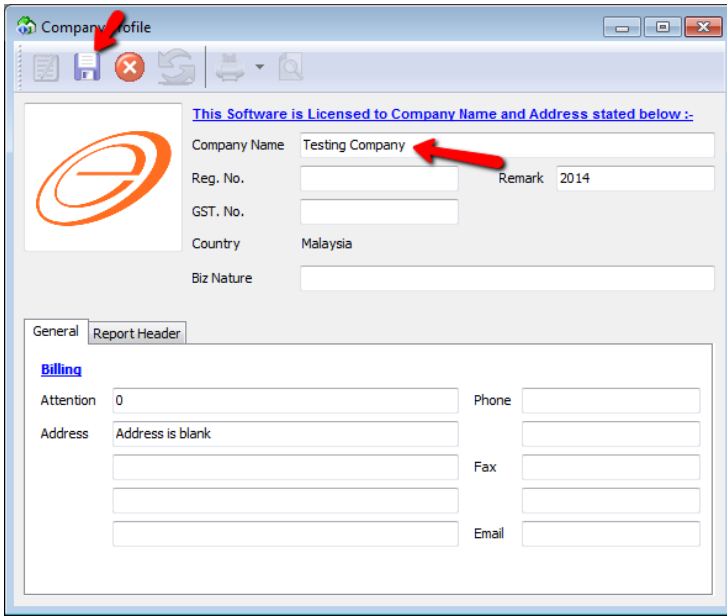
8. After done cloning , you will found 1 **new company** on **last icon** (same name with the company you select to clone) > **Double Click It .**



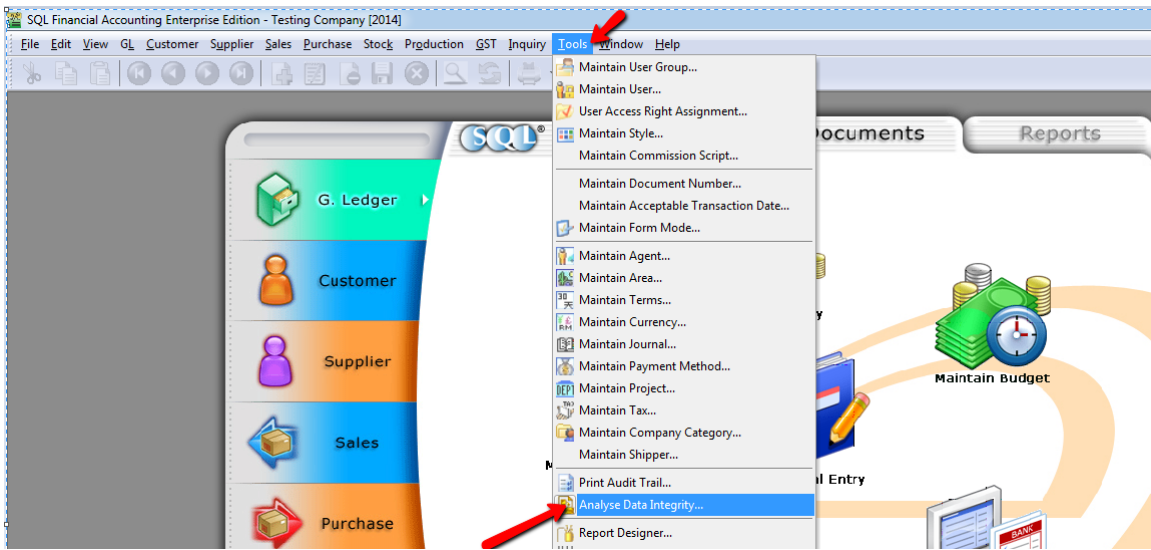
9. Enter Password ( Follow your old Company password) > Log on



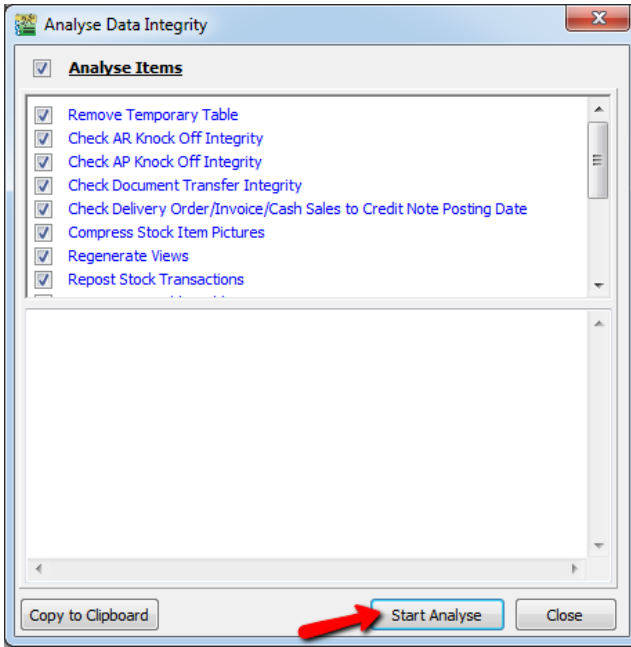
10. After Log on > go File > Company Profile to rename Company name .



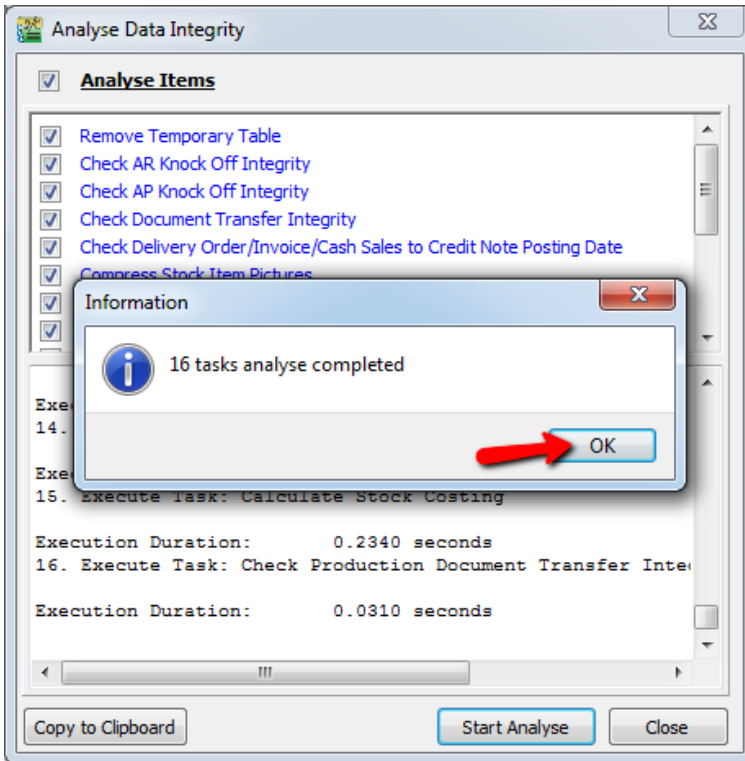
11. After rename > press on **Save**



12. Go **Tools** > **Analyse Data integrity**



13. Press **Start Analyse**



14. Press **OK**

**DONE**